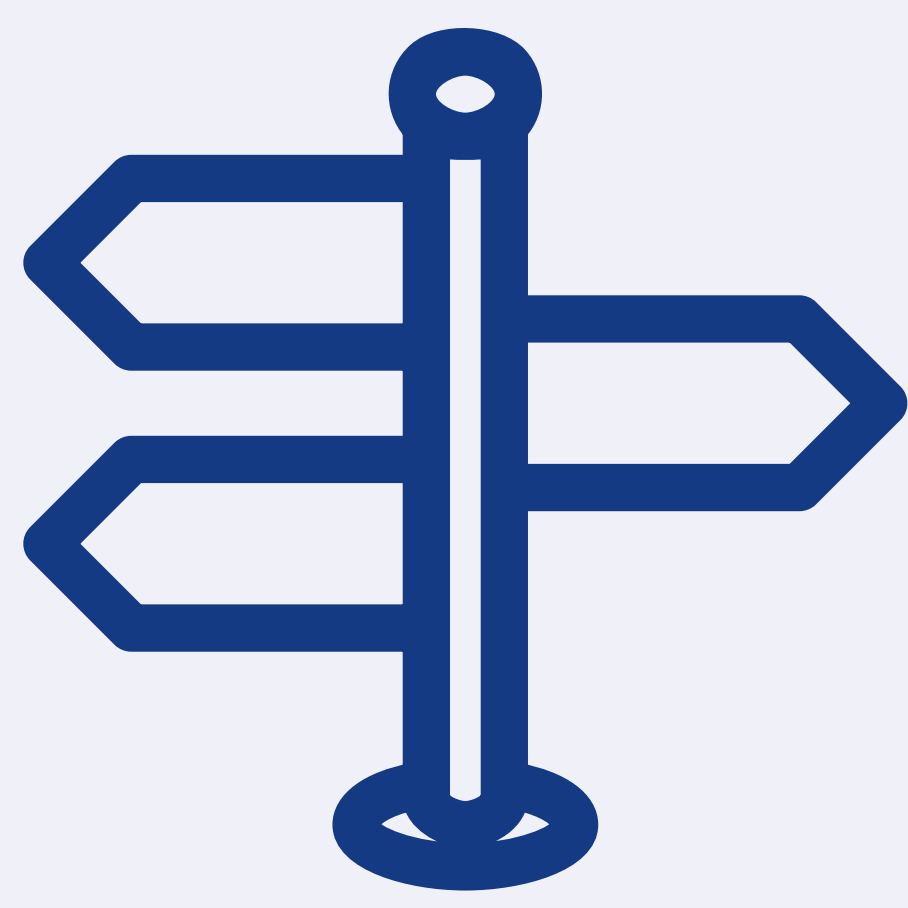


NEXT STEPS

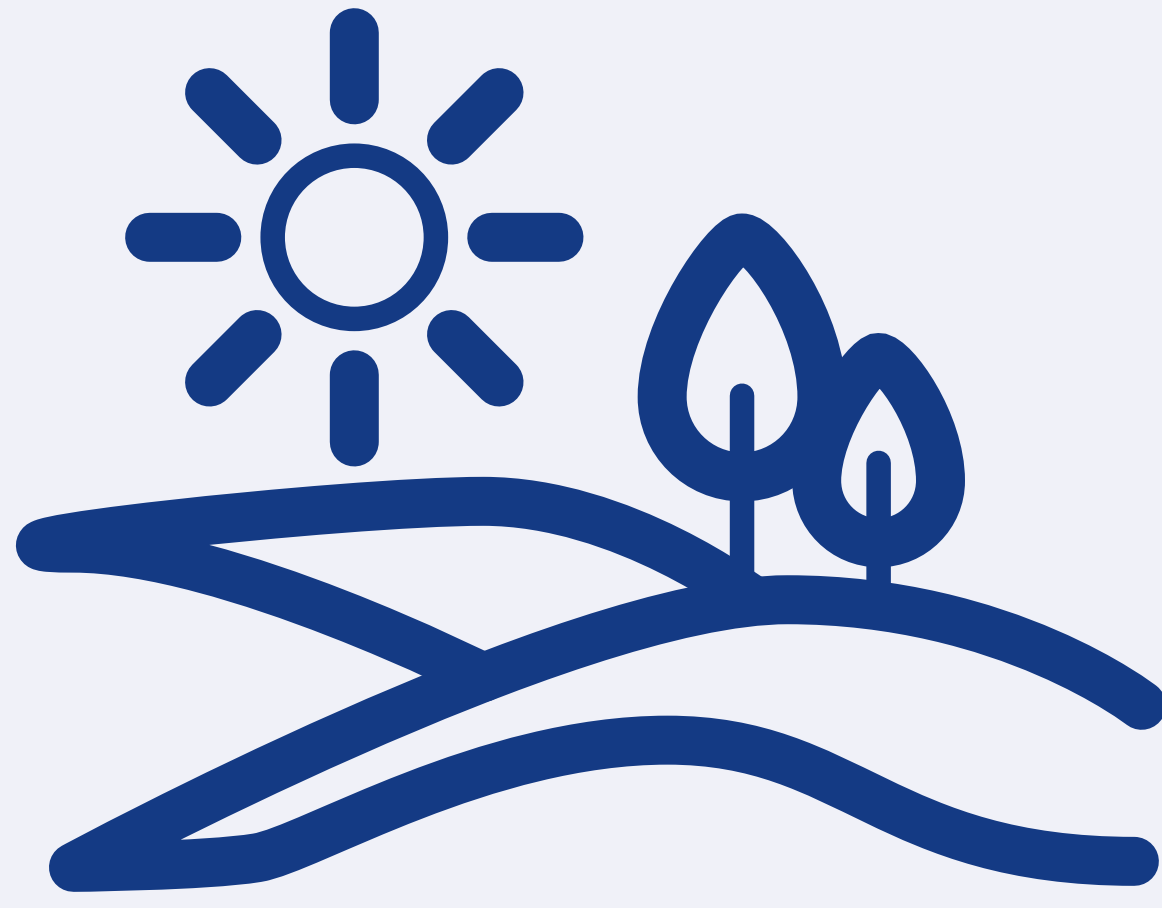
ENVIRONMENTAL IMPACT ASSESSMENT

An Environmental Impact Assessment, a formal process used to systematically assess the environmental effects of a proposed development, will be undertaken with regards to the proposal.

The resulting Environmental Impact Assessment Report will contain a detailed description of the site and the proposal. The scope of the Environmental Impact Assessment Report may be agreed with the Planning Authority in advance of submission of the planning application and is likely to contain detailed assessments of the following topics:



Alternatives;



Landscape and Visual Impact;



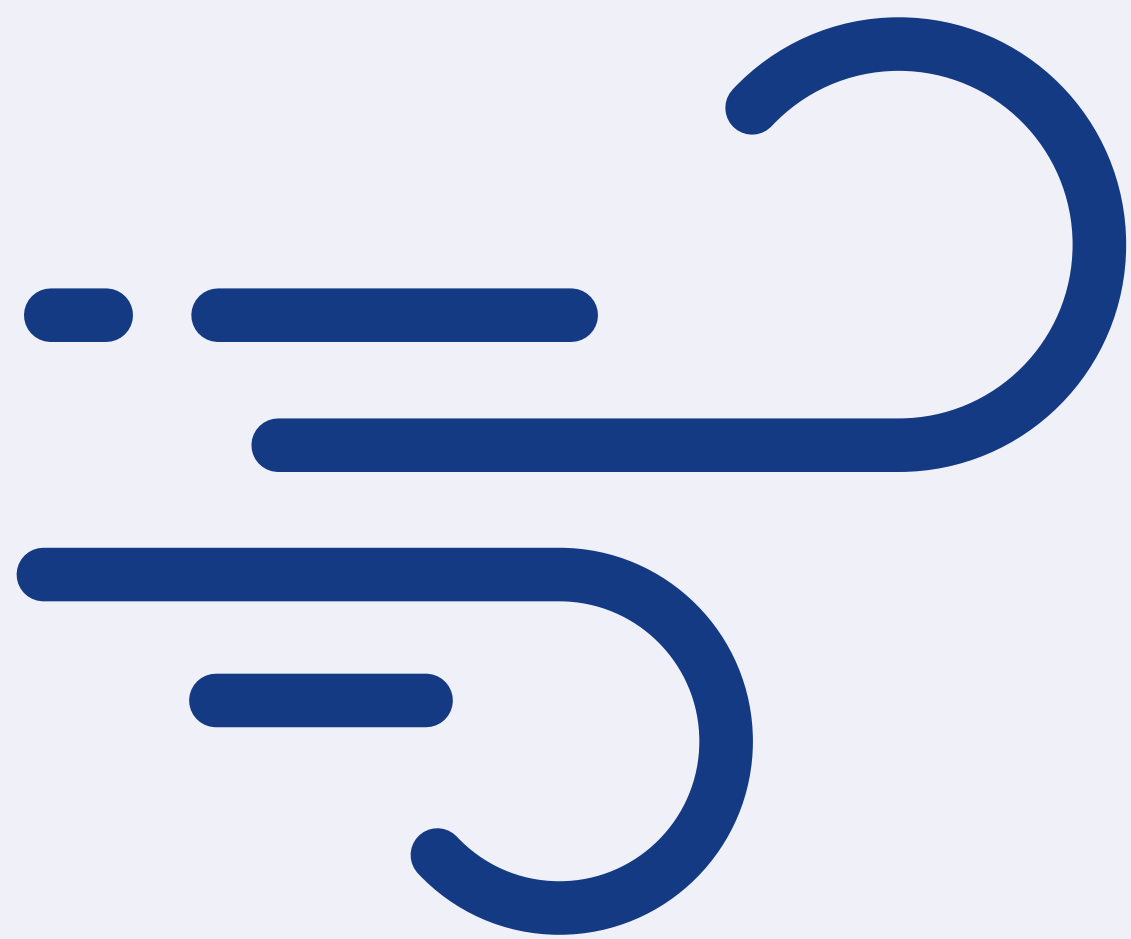
Ecology;



The Water Environment;



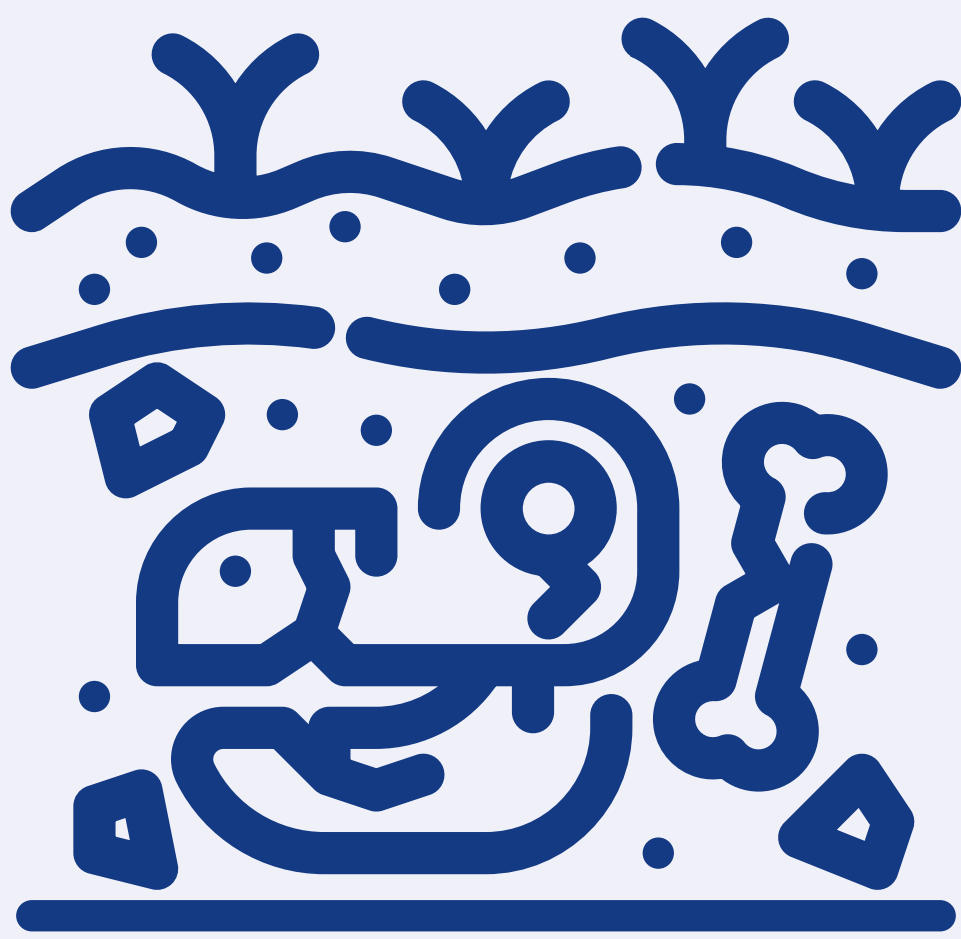
Noise;



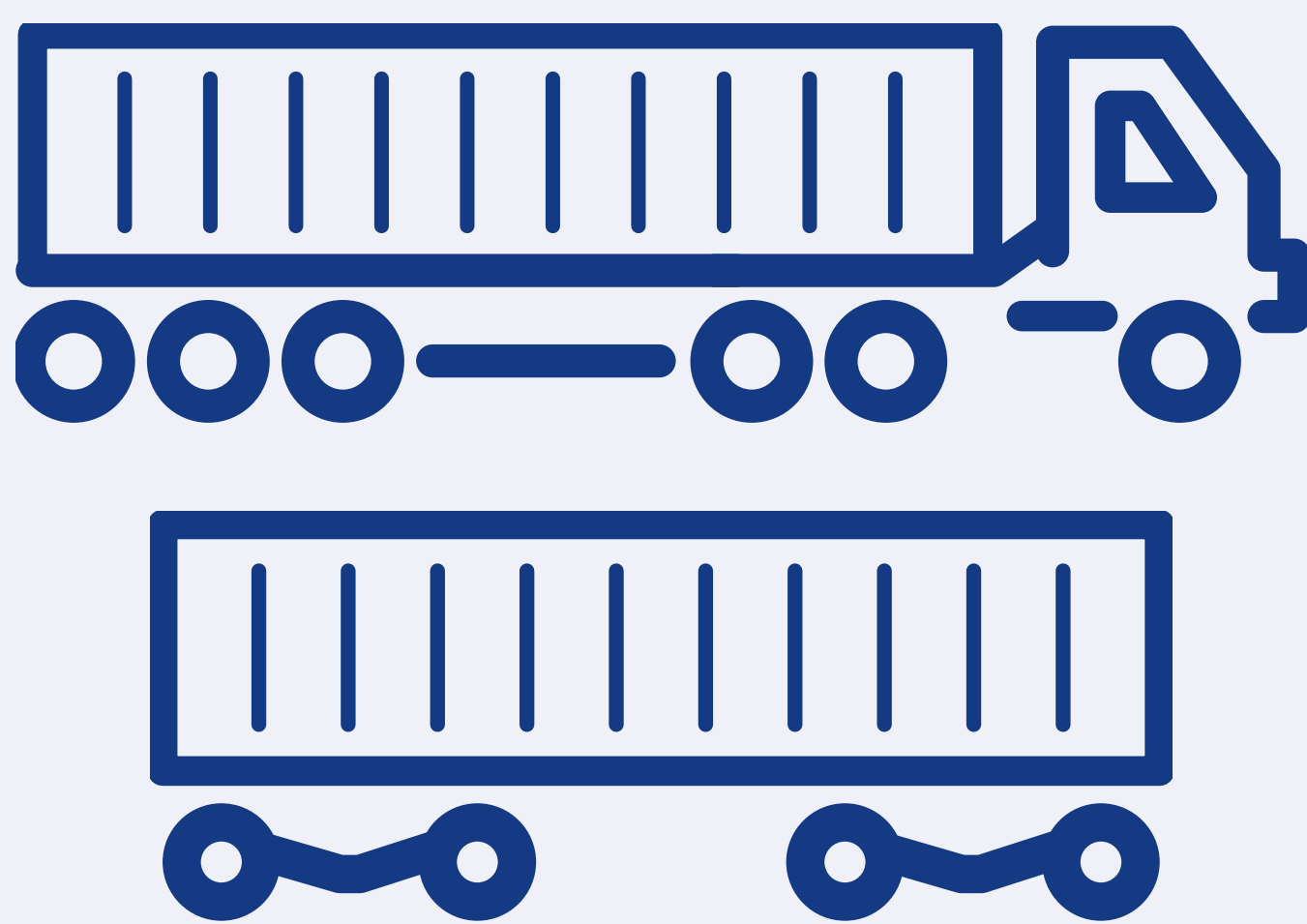
Dust and Air Quality;



Vibration;



Archaeology and Cultural Heritage;



Traffic and Transport;

The Environmental Impact Assessment Report will be made available for public inspection through the Planning Authority's website.

A non-technical summary of the EIA Report will also be made available.