

# Balmullo Quarry Extension – Introduction

Welcome to this public consultation event which seeks to provide information about the proposed extension to Balmullo Quarry, as well as the periodic review of the quarry's planning permission. It also aims to collect feedback from the community on the proposals.

## The Site

Balmullo Quarry has been operational since the early 20th century. The red felsite aggregate extracted at Balmullo is a hard wearing and durable decorative aggregate. It has many applications, including, but not limited to, driveway chippings, rail ballast, and as a road sub-base.

Breedon intends to seek planning permission to extend the extraction area by up to 5 hectares to the north allowing extraction to continue beyond the current reserve, ensuring supply of aggregate to market and continuation of employment.

The quarry would otherwise continue to operate as it currently does, with access to and from the quarry via its dedicated entrance off Quarry Road.

## About Breedon

Breedon is a leading supplier of aggregates, cement, ready mix concrete, asphalt and specialist construction products and services.

Our quarries and plants produce essential materials that build homes, workplaces and leisure spaces. From roads to runways, houses to hospitals, you'll find our products supporting modern life across the UK.

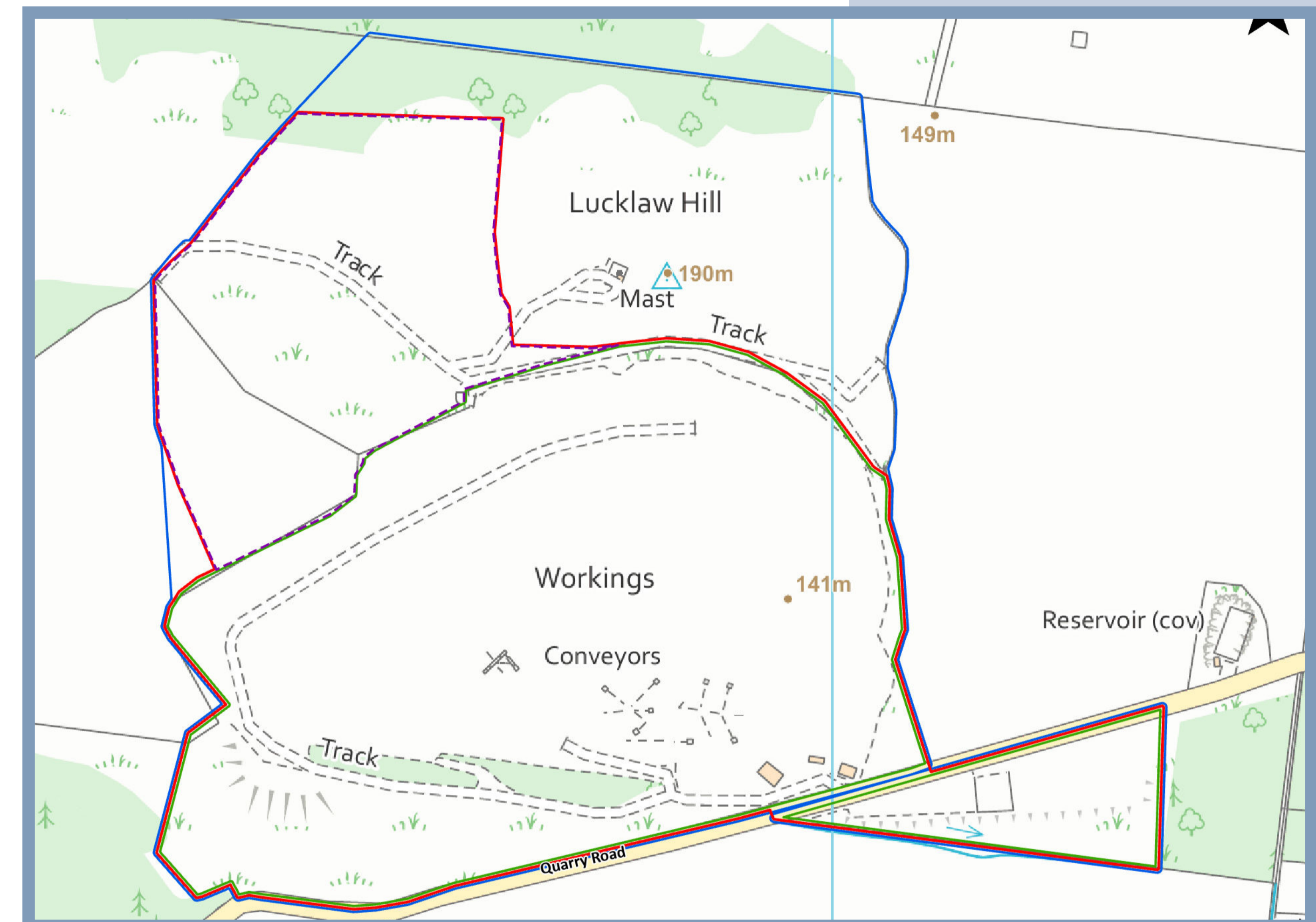
Within Scotland, Breedon operate a network of 37 quarries, 19 asphalt plants, 28 ready-mix concrete plants, 4 pre-cast concrete block making facilities and 1 cement terminal. Breedon currently employs in the region of 800 staff across its Scottish business.

Breedon aim to minimise any impact of their operations and encourage a positive approach to health, safety and care for the environment.

## The Consultation Process

Breedon are hosting two public consultation events regarding the proposed extension. The feedback gathered through these events will be used in the development of the extension proposals, and summarised in a Pre-Application Consultation (PAC) report which will be submitted with the planning application.

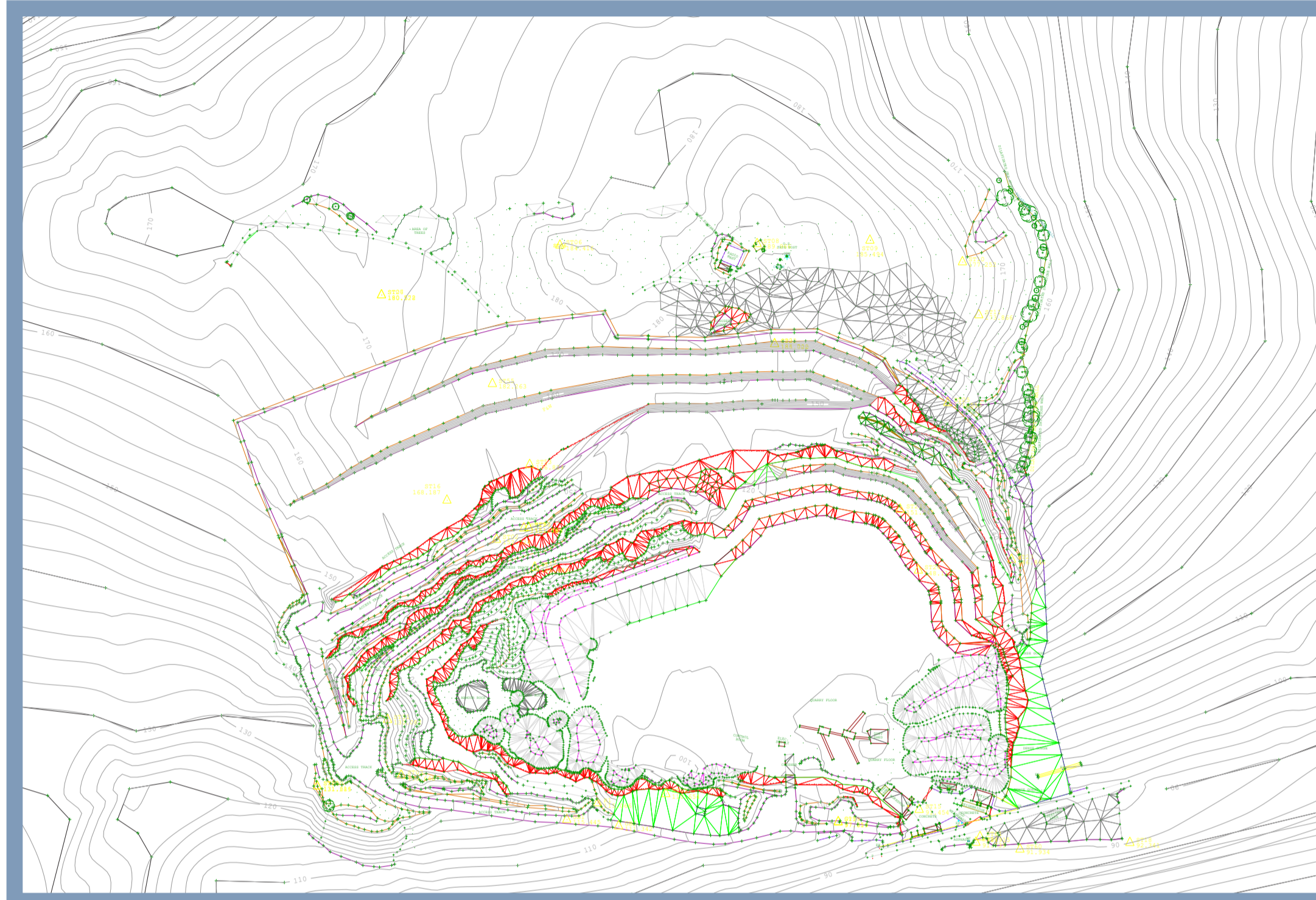
*Any comments made to the prospective applicant are not representations to the planning authority. When an application is submitted to Fife Council, normal neighbour notification and publicity will be undertaken at that time and you will have the opportunity to make formal representations regarding the proposal at that time.*



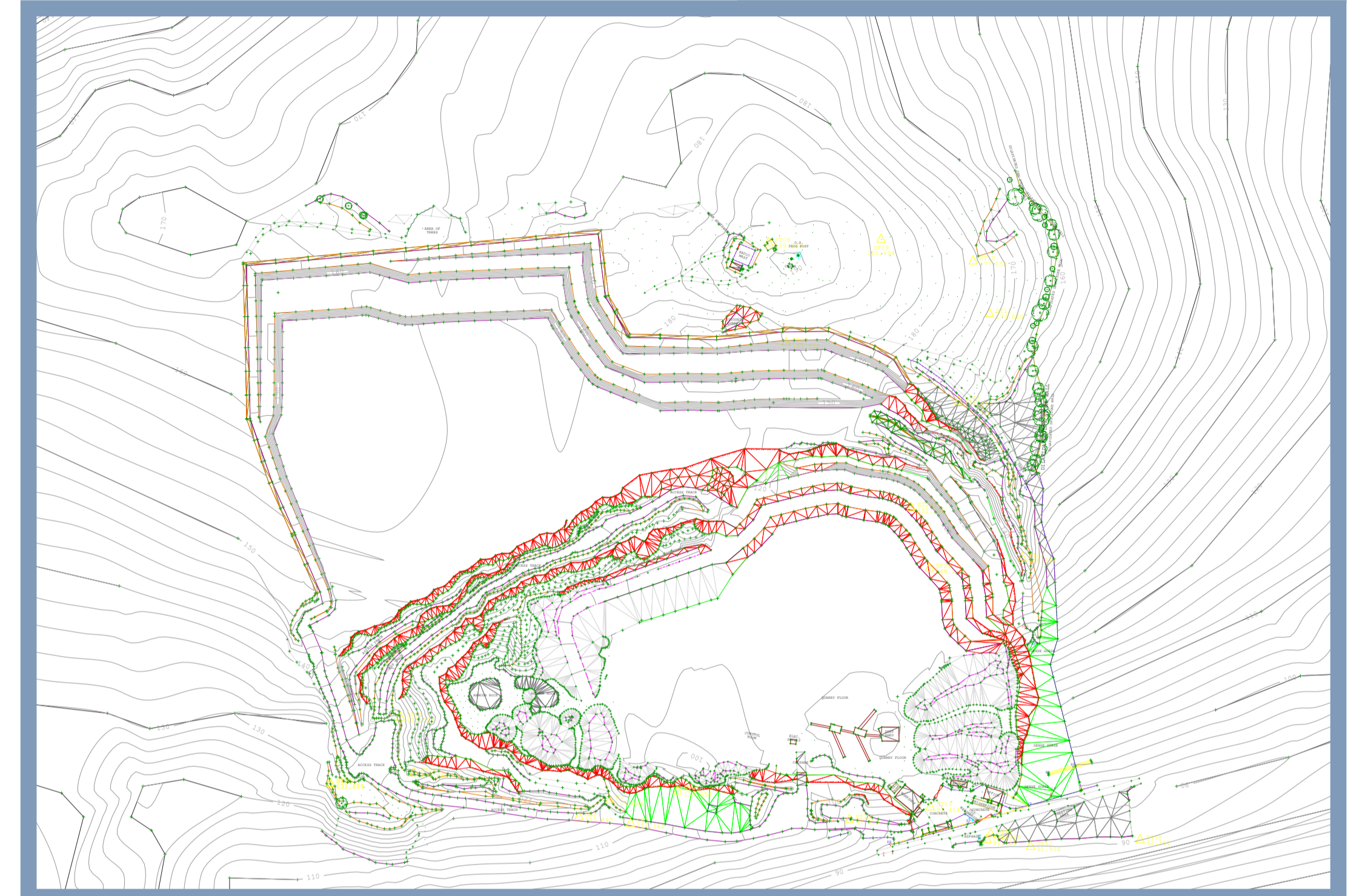
# Balmullo Quarry Extension - Development Proposals

The proposed extension to Balmullo Quarry would be operated as a continuation of the current permitted operations. The design of the proposed extension to the quarry is currently in draft form and work continues on the extent and phasing of the proposed extraction. It is estimated that the proposed extension will yield in the region of 3 million tonnes of aggregate. It is not anticipated for there to be any change to the current annual output as a result of the extension proposals.

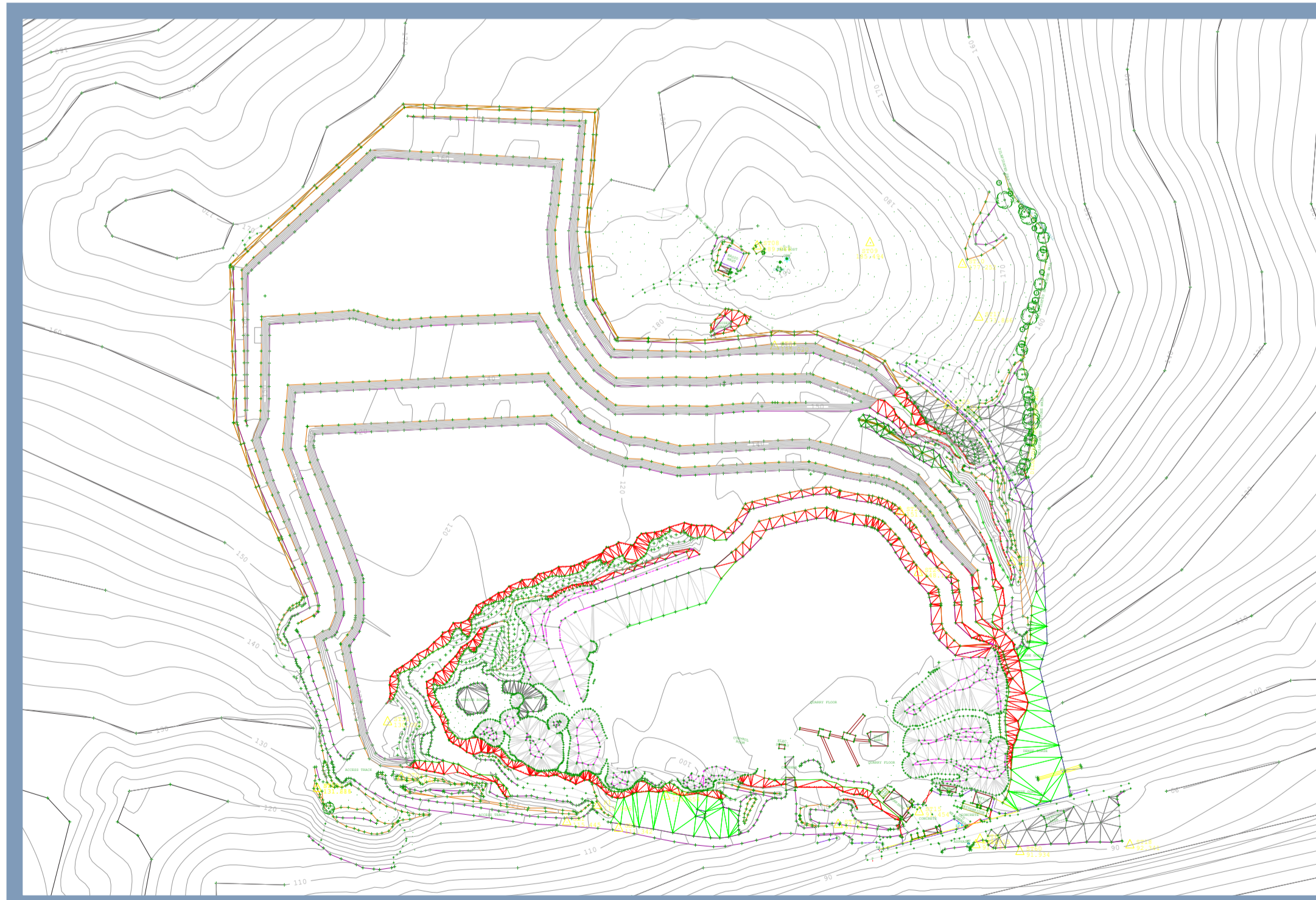
Phase 1



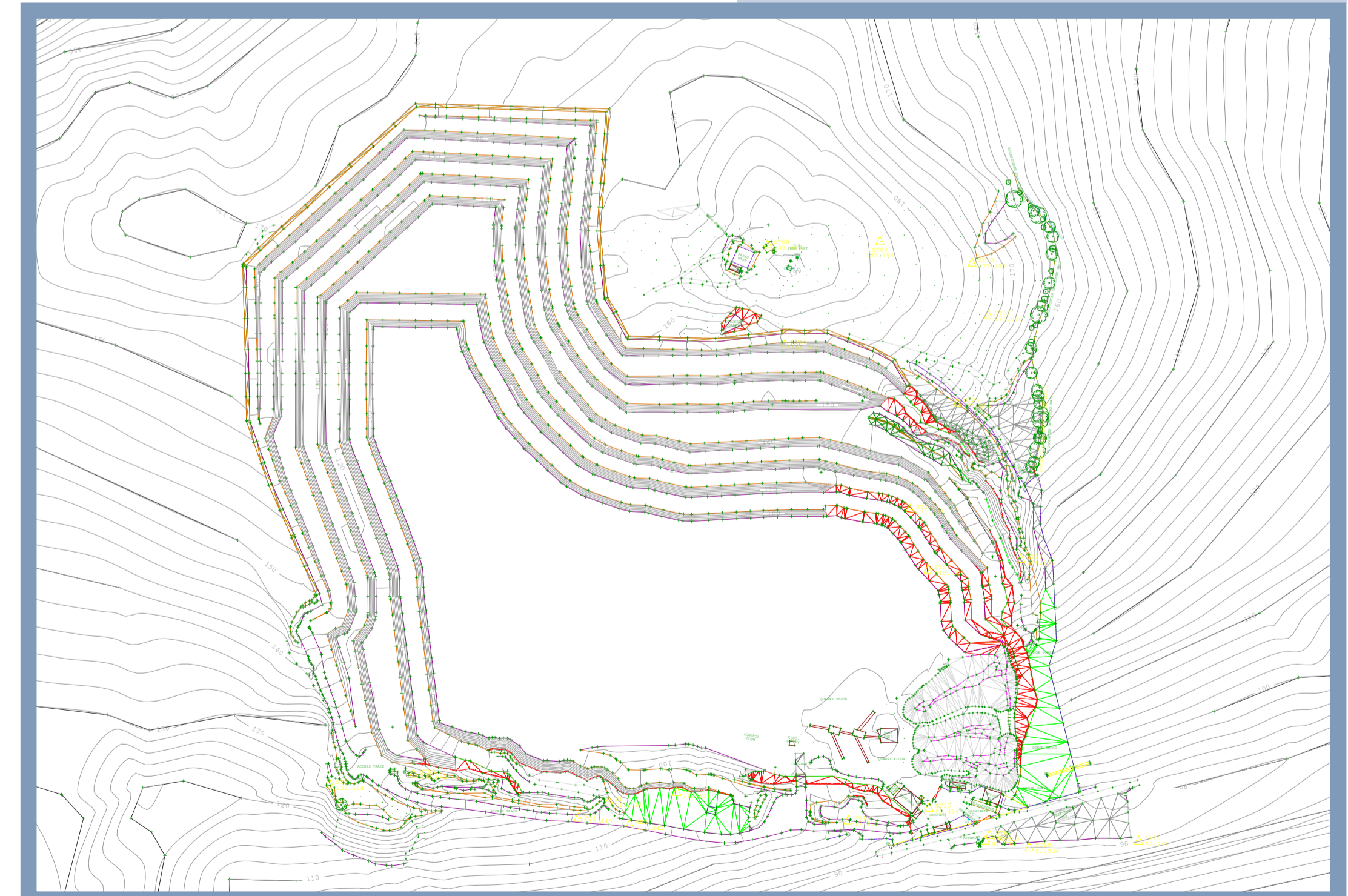
Phase 2



Phase 3



Phase 4



# Balmullo Quarry Extension – Operations

The quarry and ancillary operations can be conveniently described in five component parts comprising:

- stripping of soil and overburden;
- extraction of rock by drilling and blasting;
- transfer of extracted rock for processing;
- material processing, stocking and dispatch; and
- progressive restoration.

The quarry is worked in a generally northerly direction, developing a range of benches to ensure operational safety is maintained. The proposals will see the development continue to progress northerly into the extension area.

Rock is initially won by drilling and blasting to dislodge the rock from the face. The rock is then transported by dump truck to the processing plant located on the quarry floor for crushing and screening to produce aggregates of varying sizes. Conveyors are used to transfer material between processing plant and stockpiles. On completion of processing, products, which include driveway decorative chippings and road sub-base aggregates, are despatched to market.

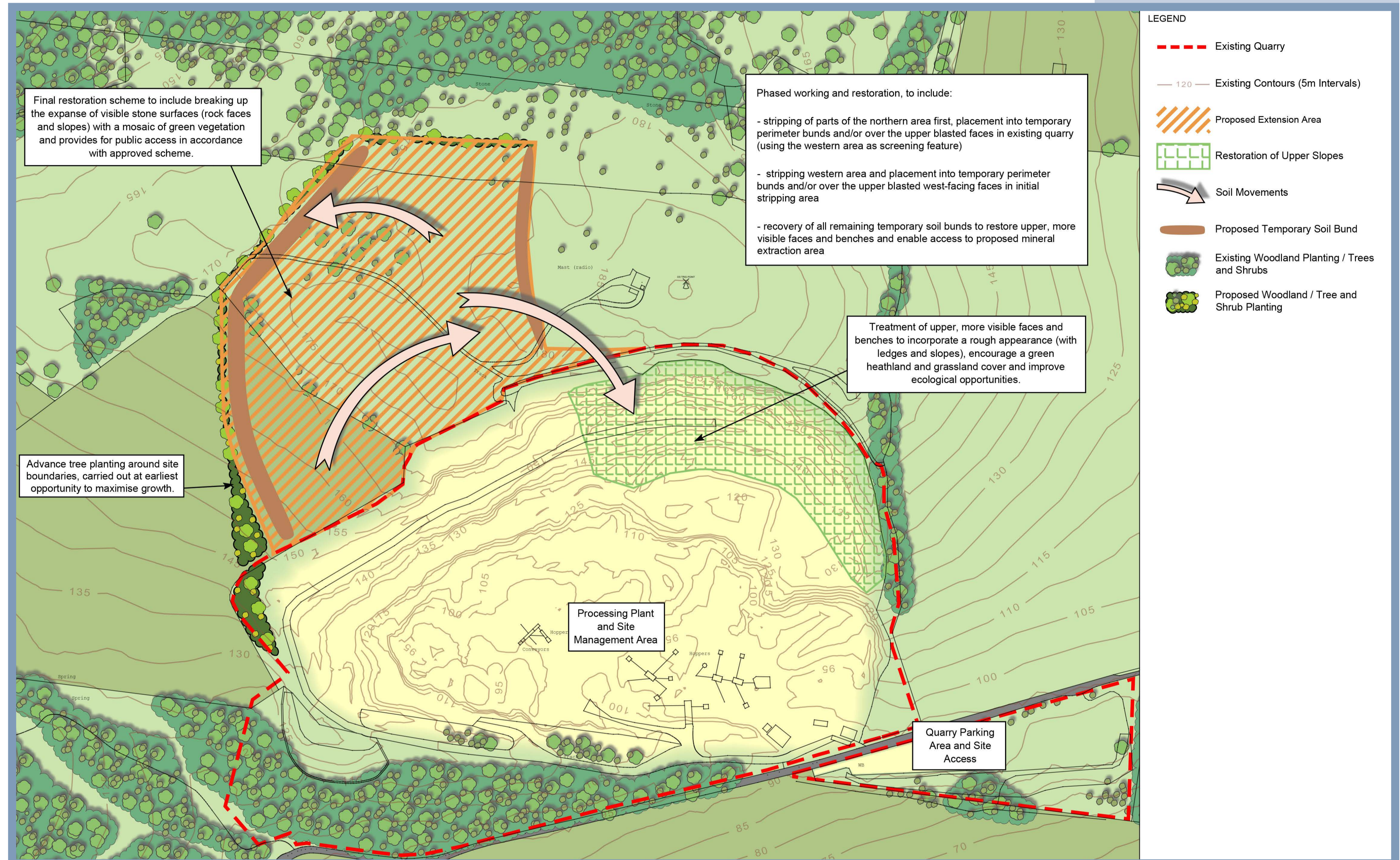
Progressive restoration is somewhat constrained at Balmullo by the substantial rock depth. Restoration is and would continue to be undertaken in a progressive manner as far as possible with soils from the working phase being directly placed on the preceding phase.



# Balmullo Quarry Extension – Landscape Strategy

A restoration scheme for the extended quarry is being developed in parallel with the quarry design and environmental assessment. The landscape strategy shown here illustrates the broad principles being applied to the restoration proposals.

Restoration at Balmullo is envisaged as currently permitted, with heathland on restoration blasted upper faces and benches, with a mosaic of grasses, heathland species and naturally weathering rock on the lower benches, and sparse grassland sward and heathland on the quarry floor. Public access would be provided in accordance with the approved scheme.



# Balmullo Quarry Extension—Application and EIA



## Environmental Assessment

As part of the preparation of the planning application, an Environmental Impact Assessment (EIA) will be carried out. A Scoping Opinion will be sought from Fife Council which will determine the scope of the assessments within the EIA. In addition to the EIA, other environmental studies may be carried out.

Baseline studies for the following topics are well underway and will be reported in the EIA Report or elsewhere in the planning application:

- Air quality;
- Ecology;
- Geology;
- Landscape and visual amenity;
- Noise;
- Traffic;
- Vibration; and
- Water environment.

Breedon has appointed SLR Consulting Limited to prepare the planning application and undertake the EIA with support from Vibrock and Felstone Consulting.

## Next Steps

A further consultation event is planned for Wednesday 20th March 2024 in the Burnside Hall.

Work on the design of the extension and the baseline studies will continue. On receipt of the EIA Scoping Opinion from Fife Council the required assessments will be carried out and the application documents prepared.

Breedon anticipates submitting a planning application to Fife Council before the end of 2024.

## Planning Application

The EIA will be reported in an EIA Report and summarised in a Non-Technical Summary (NTS) both of which will accompany the planning application. The planning application will also be supported by a Planning Statement which will consider the planning conditions for the periodic review, and a Pre-Application Consultation Report reporting on the results of the public consultation. Drawings illustrating the proposed extension phases and restoration proposal will also accompany the application.



If you can, please take a few minutes to fill out a feedback form or contact us at [www.breedongroup.com/balmullo-quarry-public-consultation](http://www.breedongroup.com/balmullo-quarry-public-consultation)

# Balmullo Quarry Extension – Site Views



View from A914 Balmullo



View from core path by Cuplahills woodland walks