

FYFESTONE ENVIROPREMIER



BALANCING ARCHITECTURAL MASONRY PRODUCTS WITH MEASURABLE ENVIRONMENTAL IMPACT.

- More than 60% recycled / secondary aggregate content guaranteed on standard colours
- Fairfaced, textured, and polished blocks available for a variety of design finishes
- Available in eight attractive shades to match regional variations across the UK
- EnviroPremier can be used in mixed facing developments to add interest, kerb appeal and added value
- Combine strength, durability and decorative appeal for both



APPLICATIONS

The EnviroPremier walling range is suitable for all commercial, public and infrastructure buildings.

Suitable for use above and below a damp-proof course (DPC), both internally and externally. Breedon Group do not recommend Cellular or Hollow units for external use. The blocks are available in the following finishes:

FAIRFACED – Consistent close textured face, free from significant blemishes and with a clean regular arise. Guaranteed one face and one end.

TEXTURED – These units are shotblasted to provide a lightly textured surface, exposing the colour and texture of the natural aggregates used in their manufacture. Supplied face only as standard.

POLISHED – These units are polished to produce a high sheen finish whilst exposing the natural aggregates to give a depth of colour. Supplied face only as standard.

Note: The polishing process reduces the nominal width by approximately 3mm.

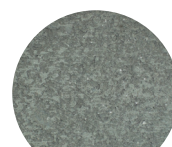
MANUFACTURING STANDARD

The EnviroPremier range is manufactured using a semi-dry process and is compliant to European Standard BS 771-3.

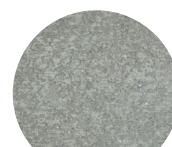
All Breedon Group products are manufactured in accordance with ISO 9001 with factory compliance to ISO 14001.



COLOUR SWATCHES



ASH



BIRCH



GLACIER



EVERGLADE



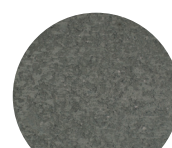
MARIGOLD



RED



WHEATON



CHARCOAL

TEXTURE AND SHADE

Blocks are free from significant blemishes, have clean arrises and have a regularity of colour and texture within the limitations allowed by naturally occurring materials.

FYFESTONE ENVIROPREMIER

PRODUCT INFORMATION



SUSTAINABILITY AND LOCAL SOURCING

ENERGY USE: Breedon Group is at the forefront of sustainability and has committed to reduce carbon emissions.

RECYCLABLE: 100% of the product can be recycled thus reducing the amount of material that is sent to landfill.

MANUFACTURING LOCATION:

Produced in the UK, with locally sourced materials under strict environmental and social legislation, for local supply.

RESPONSIBLE SOURCING:

Products are assessed on:

- Quality management
- environmental management
- health and safety management
- greenhouse gas emissions
- minimising raw material usage
- labour practise
- biodiversity
- community engagement.

ENVIROPREMIER WALLING

Type	96mm	140 Midi	136mm
Form	Solid	Solid	Solid
Size (mm)*	440x215	290x215	440x215
Weight (kg) (approx)	18.2	17.89	25.4
Units / m ² (approx)	9.88	15.00	9.88
No. per pack	72	72	48
Pack weight (T)	1.31	1.29	1.31
Colour available	FF / Tex / Pol	FF / Tex / Pol	FF / Tex / Pol

KEY AGGREGATES AND RECYCLED CONTENT

The EnviroPremier range has a guaranteed specially selected recycled / secondary aggregate content of >60% and is manufactured on modern automated plants. Replacement cement is also incorporated to minimise environmental impact, whilst maintaining quality throughout.

POLICIES

Breedon Group policies on the environment and community, health and safety and sustainable solutions for different product applications can be viewed on our website breedongroup.com

INSTALLATION STANDARD

CIS 37, recommends that for repetitive manual handling of masonry units, the unit weight should typically be no greater than 20kg. Breedon Fyfestone produce both a 440x215x96mm and a 140mm Midi block that weigh below the 20kg guidelines.

MAINTENANCE AND CLEANING

Breedon Group can supply on request advice on general maintenance. All enquiries are to be put through our sales office who have contact details and brochure information on the service.

COSHH DATA

Full COSHH data on Breedon Fyfestone is available on request.

* Actual face size.

A full range of special blocks are also available upon request. Please contact technical services for details.

The shades illustrated are as accurate as modern printing will allow. The manufacturer of Fyfestone Architectural Masonry cannot be held responsible for the apparent fading of colour or any other effect on the appearance of any product due to "efflorescence" which is a characteristic of all good quality products with high cement content. The effect generally disappears with time.

TABLE 1 – **PERFORMANCE**

Type Dimensional tolerance	D2
Special shaped units	D1
Mean unit strength:	
Solid	14.0 N/mm ²
Cellular	9.0 N/mm ²
Net dry density:	2050 kg/m ³
Thermal conductivity:	
3%	1.33 W/mK
5%	1.43 W/mK
(% by vol)	
Water vapour diffusion coefficient:	5/150
Moisture movement	<0.8mm/m
Water absorption by capillarity:	<30mm/m ² .s ^{0.5}
Reaction to fire	A1
Durability	Frost resistant
Bond strength	0.15N/mm ²

TABLE 2 – **THERMAL RESISTANCE**

Width (mm)	Density	Thermal resistance (m ² K/W)	
		3%	5%
96	Solid	0.071	0.066
136	Solid	0.105	0.098
Midi	Solid	0.105	0.098
140	Multi cellular	0.164	0.158

* Based upon 5% moisture content by volume

TABLE 3 – **UNIT WEIGHTS**

Width (mm)	Form	Unit weight (kg)*	Built weight (kg/m ²)*
96	Solid	18.6	191
136	Solid	26.4	285
Midi	Solid	17.89	284
140	Multi cellular	18.5	199

TABLE 4 – **FIRE RESISTANCE**

Width (mm)	Form	Load bearing	Non load bearing
96	Solid	1	1.5
136	Solid	2	3
Midi	Solid	3	3
140	Multi cellular	N/A	3

TABLE 5 – **SOUND INSULATION***

Width (mm)	Form	Rw dB
96	Solid	43
136	Solid	46
Midi	Solid	46
140	Multi cellular	43

*Based upon mass law calculation

TABLE 6 – **CHARACTERISTIC STRENGTH FK FACTORS**

Width (mm)	Form	9.0*	14.0**
96	Solid	N/A	9.2
136	Solid	N/A	7.7
Midi	Solid	N/A	7.7
140	Multi cellular	5.94	N/A

*Compressive strength on units (N/mm²)

**assumes a type III mortar (M4)

TABLE 7 – **LIGHT REFLECTIVE % VALUES**

Colour	Fairfaced Tungston Halogen	Fairfaced Fluorescent	Textured Tungston Halogen	Textured Fluorescent
Everglade	31	31	37	38
Natural	49	49	53	53
Harvest	39	39	52	52
Marigold	39	37	46	45



Kemnay Block Plant, Aquithie Road, Kemnay, Scotland AB51 5PD

The information contained within this publication was accurate at time of production. However, Breedon Group reserves the right to introduce modifications or changes to detail at any time without notice. No charge is levied for this publication or advice therein, and accordingly the company, its employees and authorised agents can accept no liability whatsoever, either indirectly or directly arising from the use of its products in connection with any information or advice contained in this guide.

TECHNICAL SUPPORT

Detailed guidance and assistance with the preparation of specification and use of Breedon Fyfestone products is available through the sales office.

**FOR FURTHER INFORMATION
PLEASE CALL OUR SALES
HOTLINE:**

01467 651 000
masonry@breedongroup.com
www.breedongroup.com