

Certificate GB19/963961

The Energy management system of

Whitemountain Quarries Limited trading as Breedon

5 Blackwater Road, Mallusk, Newtownabbey, Co. Antrim, BT36 4TZ, United Kingdom

has been assessed and certified as meeting the requirements of
ISO 50001:2018

For the following activities

All energy usage associated with quarrying and the production of aggregates, the production and laying of bituminous products and contractual civil engineering works, surface dressing, application of road markings, high skid resistant surfacing, traffic management and street lighting, laying of pavement quality concrete, waste management activities, stevedoring, supply of paving grade bitumen and bitumen emulsions, management of fleet vehicles, the production and supply of ready-mix concrete and masonry units, the extraction via dredging, processing and supply of sand.

This certificate is valid from 07 October 2021 until 07 October 2024 and remains valid subject to satisfactory surveillance audits.

Issue 4. Certified since 08 October 2015.

Certified activities performed by additional sites listed on subsequent pages.

Authorised by



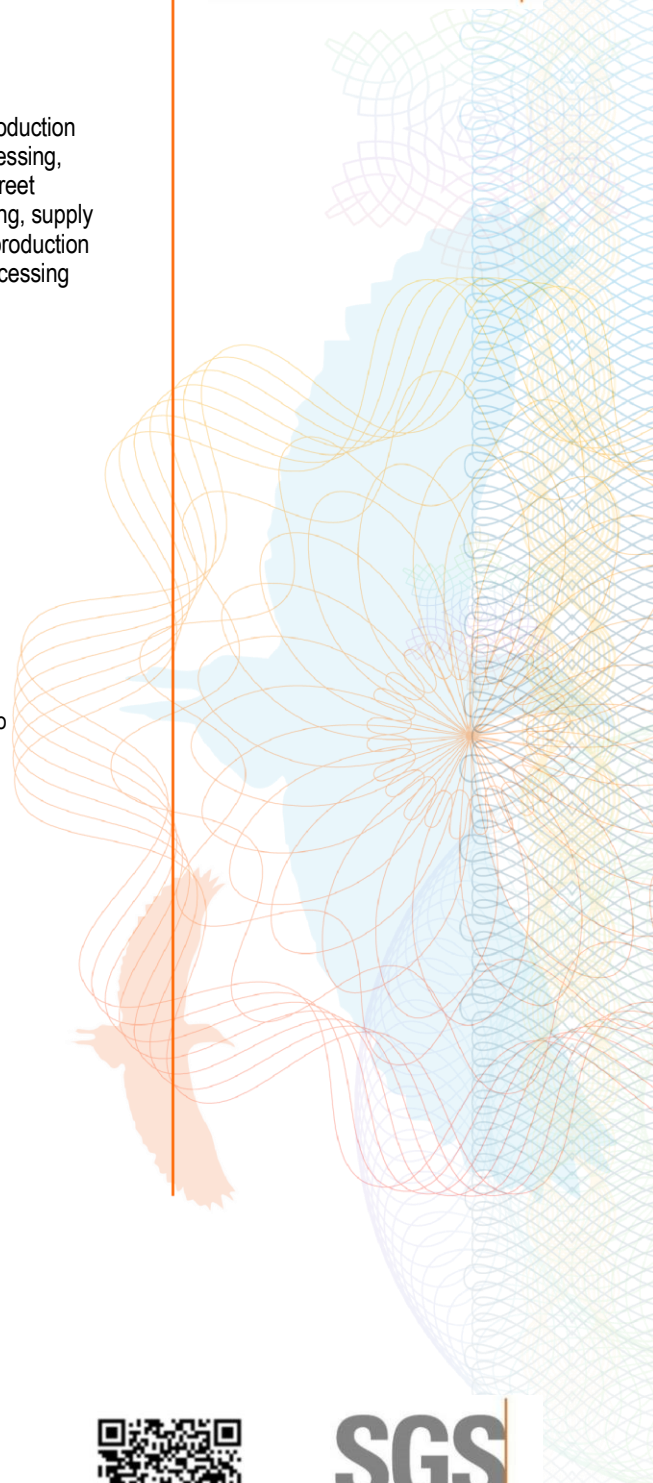
SGS United Kingdom Ltd

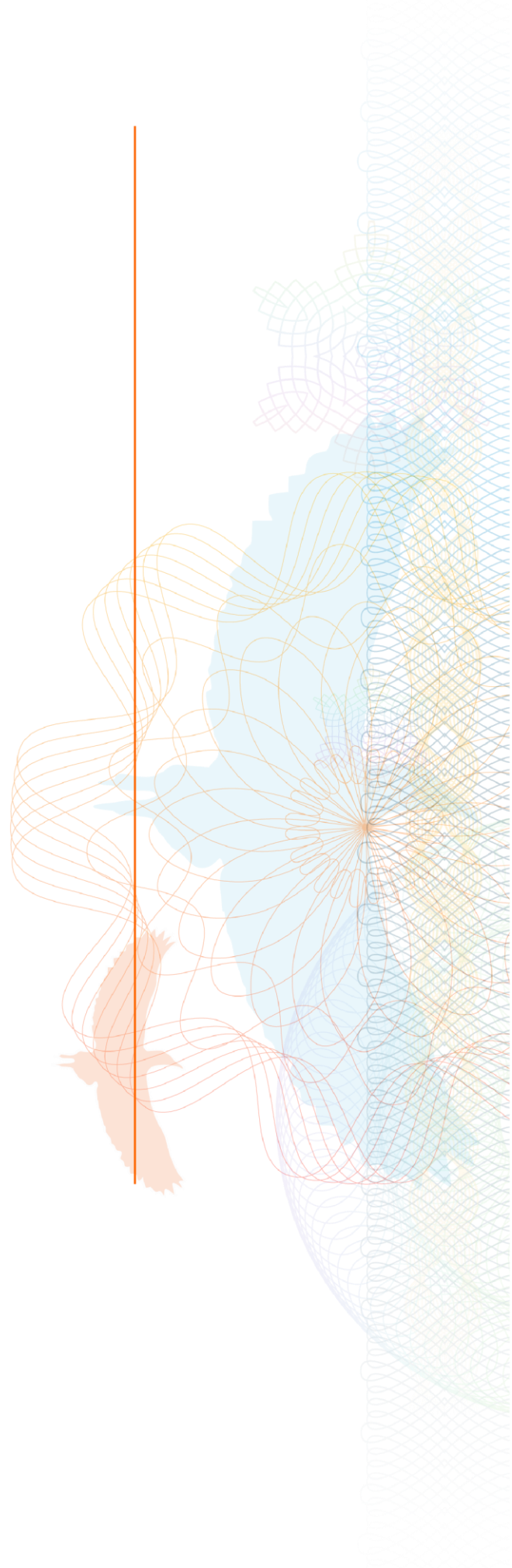
Rossmore Business Park, Ellesmere Port, Cheshire, CH65 3EN, UK

t +44 (0)151 350-6666 - www.sgs.com



This document is issued by the Company subject to its General Conditions of Certification Services accessible at www.sgs.com/terms_and_conditions.html. Attention is drawn to the limitations of liability, indemnification and jurisdictional issues established therein. The authenticity of this document may be verified at <http://www.sgs.com/en/certified-clients-and-products/certified-client-directory>. Any unauthorized alteration, forgery or falsification of the content or appearance of this document is unlawful and offenders may be prosecuted to the fullest extent of the law.





Whitemountain Quarries Limited trading as Breedon

ISO 50001:2018

Issue 4
Sites
<p>Whitemountain Quarries Limited trading as Breedon 5 Blackwater Road, Mallusk, Newtownabbey, Co. Antrim, BT36 4TZ, United Kingdom</p> <p>All energy usage associated with quarrying and the production of aggregates, the production and laying of bituminous products and contractual civil engineering works, surface dressing, application of road markings, high skid resistant surfacing, traffic management and street lighting, laying of pavement quality concrete, waste management activities, stevedoring, supply of paving grade bitumen and bitumen emulsions, management of fleet vehicles, the production and supply of ready-mix concrete and masonry units, the extraction via dredging, processing and supply of sand.</p>
<p>Whitemountain Quarries Limited trading as Breedon Ballystockart Quarry, Ballystockart Road, Comber, Newtownards, BT23 5QY, United Kingdom</p> <p>All energy usage associated with quarrying and production of aggregates, production of ReadyMix Concrete</p>
<p>Whitemountain Quarries Limited trading as Breedon Barnetts Dock, Dufferin Road, Belfast, BT3 9AA, United Kingdom</p> <p>All energy usage associated with quarrying and the production of aggregates, the production and laying of bituminous products and contractual civil engineering works, the production and supply of masonry units, surface dressing, laying of pavement quality concrete.</p>
<p>Whitemountain Quarries Limited trading as Breedon Blackmountain Site, Upper Springfield Road, Hannahstown, Belfast, BT17 0LU, United Kingdom</p> <p>All energy usage associated with the production and laying of bituminous products and contractual civil engineering works, application of road markings, high skid resistant surfacing, traffic management, production of Ready Mix Concrete, laying of pavement quality concrete, waste management activities, management of fleet vehicles.</p>
<p>Whitemountain Quarries Limited trading as Breedon Cam Quarry, 39 Cam Road, Macosquin, Coleraine, BT51 4PX, United Kingdom</p> <p>All energy usage associated with quarrying and the production of aggregates, the production and laying of bituminous products and contractual civil engineering works, surface dressing, application of road markings, high skid resistant surfacing, management of fleet vehicles.</p>



This document is issued by the Company subject to its General Conditions of Certification Services accessible at www.sgs.com/terms_and_conditions.html. Attention is drawn to the limitations of liability, indemnification and jurisdictional issues established therein. The authenticity of this document may be verified at <http://www.sgs.com/en/certified-clients-and-products/certified-client-directory>. Any unauthorized alteration, forgery or falsification of the content or appearance of this document is unlawful and offenders may be prosecuted to the fullest extent of the law.



Whitemountain Quarries Limited trading as Breedon

ISO 50001:2018

<p>Whitemountain Quarries Limited trading as Breedon White Mountain Quarry, 14 White Mountain Road, Lisburn, BT28 3QY, United Kingdom</p> <p>All energy usage associated with the quarrying and production of aggregates, the production of readymix concrete</p>
<p>Whitemountain Quarries Limited trading as Breedon Whitemountain Bitumen, Airport Road West, Belfast, BT3 9ED, United Kingdom</p> <p>All energy usage associated with the supply of paving grade bitumen and bitumen emulsions.</p>
<p>Whitemountain Quarries Limited trading as Breedon Whitemountain Concrete, 60 Ballycraig Road, Newtownabbey, BT36 4SX, United Kingdom</p> <p>All energy usage associated with the production of readymix concrete</p>
<p>Whitemountain Quarries Limited trading as Breedon Whitemountain Sand, 17 Shore Road, Ballinderry, Lisburn, BT28 2LQ, United Kingdom</p> <p>All energy usage associated with the extraction of sand via dredging, processing and supply of sand</p>
<p>Whitemountain Quarries Limited trading as Breedon Temple Quarry, 26 Ballycarnagannon Road, Lisburn, BT27 6YA, United Kingdom</p> <p>All energy usage associated with quarrying and the production of aggregates, the production and laying of bituminous products and contractual civil engineering works, the production and supply of masonry units, surface dressing, laying of pavement quality concrete.</p>
<p>Whitemountain Quarries Limited trading as Breedon Macosquin quarry, 1 Letterloan Road, Macosquin, Coleraine, BT51 4PP, United Kingdom</p> <p>All energy usage associated with quarrying and the production of aggregates, the production and laying of bituminous products and contractual civil engineering works, surface dressing, application of road markings, high skid resistant surfacing, traffic management and street lighting, laying of pavement quality concrete, waste management activities.</p>



This document is issued by the Company subject to its General Conditions of Certification Services accessible at www.sgs.com/terms_and_conditions.html. Attention is drawn to the limitations of liability, indemnification and jurisdictional issues established therein. The authenticity of this document may be verified at <http://www.sgs.com/en/certified-clients-and-products/certified-client-directory>. Any unauthorized alteration, forgery or falsification of the content or appearance of this document is unlawful and offenders may be prosecuted to the fullest extent of the law.

